



NHSBN Community Hospitals

Agenda

Introduction to NHS Benchmarking

Community hospital projects

Emergency care data

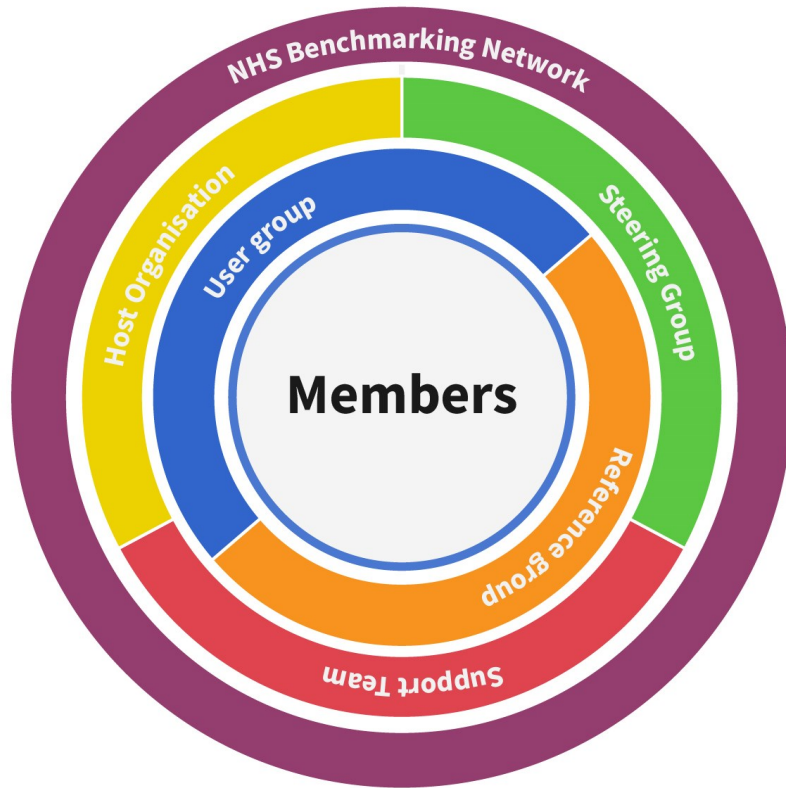
Intermediate care data

What next

An introduction to the NHS Benchmarking Network

NHS Benchmarking Network

What is the Network?



Membership covering 4 Constituencies

- Mental Health and Learning Disabilities & Autism
- Community
- Acute
- ICB/Commissioner – ICS

Governed through the Constitution and Terms of Membership

<https://www.nhsbenchmarking.nhs.uk/governance>

Network Vision and Values

Vision

To enable members to improve patient outcomes, raise health standards, and deliver quality health and care services through data excellence, benchmarking, and the sharing of innovation.

Values

- **Excellence** – Always striving to be the best we can be, in everything we do
- **Respect** – Value everyone, acknowledge members' unique experiences, work together to deliver improvement
- **Integrity** – Be transparent, be realistic, be honest

The Network in Numbers (2023/24)

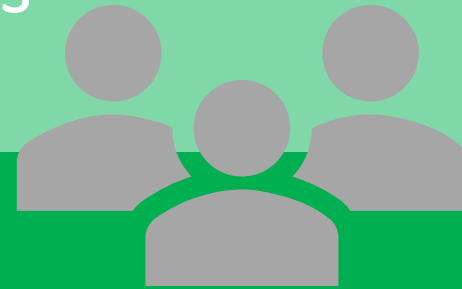


700,000+

Data points in 2023/24
collections

24

National events
delivered



1,500+

Event attendees

24,600+

Members' area logins



4,900+

Active members' area users



3,300+

Reports
downloaded

2024/25 member work programme



Acute Sector

- Acute Indicators
- Acute Pharmacy & Medicines Optimisation
- Emergency Care
- Managing Frailty in the Acute Setting
- National Cost Collection Reports
- Outpatients



Acute and Community Sector

- Adult Therapies
- Virtual Wards



Community Sector

- Community Indicators (monthly)
- Children's Community Therapies
- District Nursing
- Healthy Child Programme & Children's Community Nursing
- Intermediate Care



Mental Health Sector

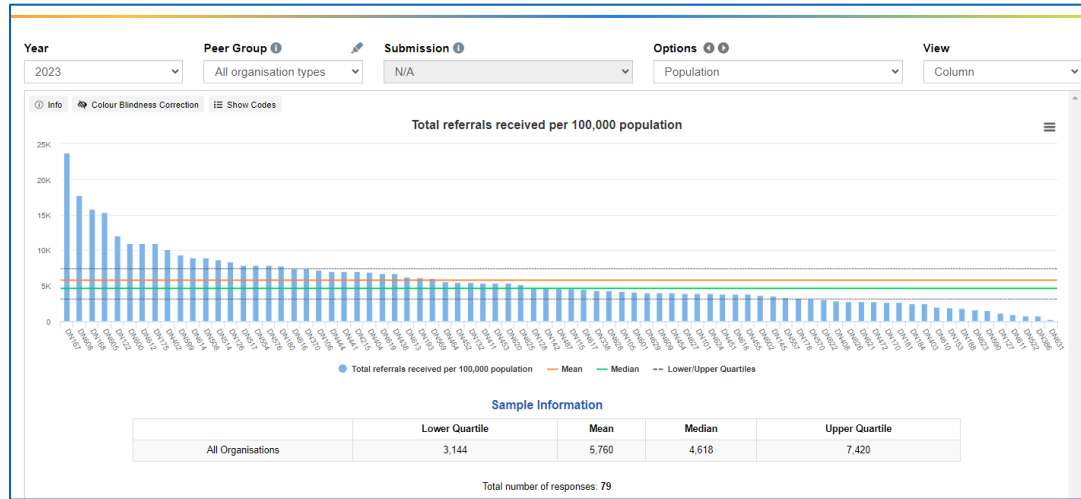
- Adults & Older People's Mental Health
- Children & Young People's Mental Health
- Learning Disability Specialist Services
- MHLDA Indicators (quarterly)



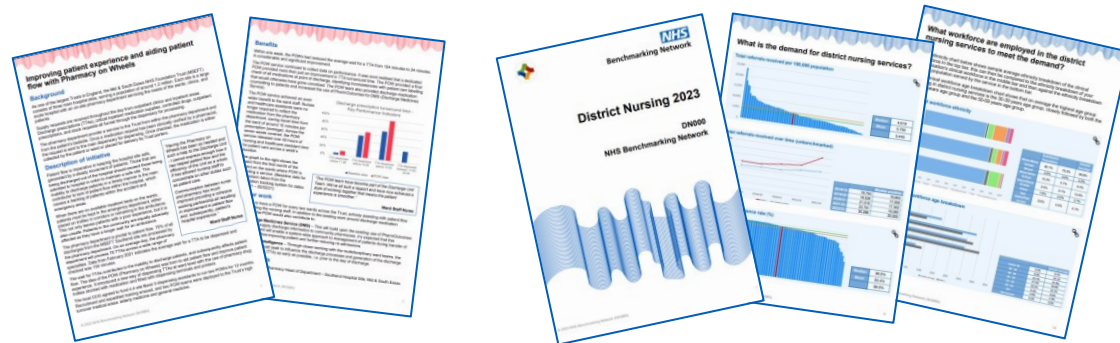
Integrated Care System

- Integrated Care Benchmarker
- Whole System Events

Resources



- Online project toolkits
- Variety of reports:
 - Member project reports for submitting organisations
 - Project overview reports for all organisations
 - System level reports
 - National cost collection reports for English Acute Trusts
- Webinar presentations and recordings
- Case studies
- Shared learning compendiums
- NHSFutures workspace
- Access to the expertise of the NHSBN team



Network membership

Vibrant member community covering all sectors of the NHS, as well as National Bodies, Professional Bodies and Independent Providers.

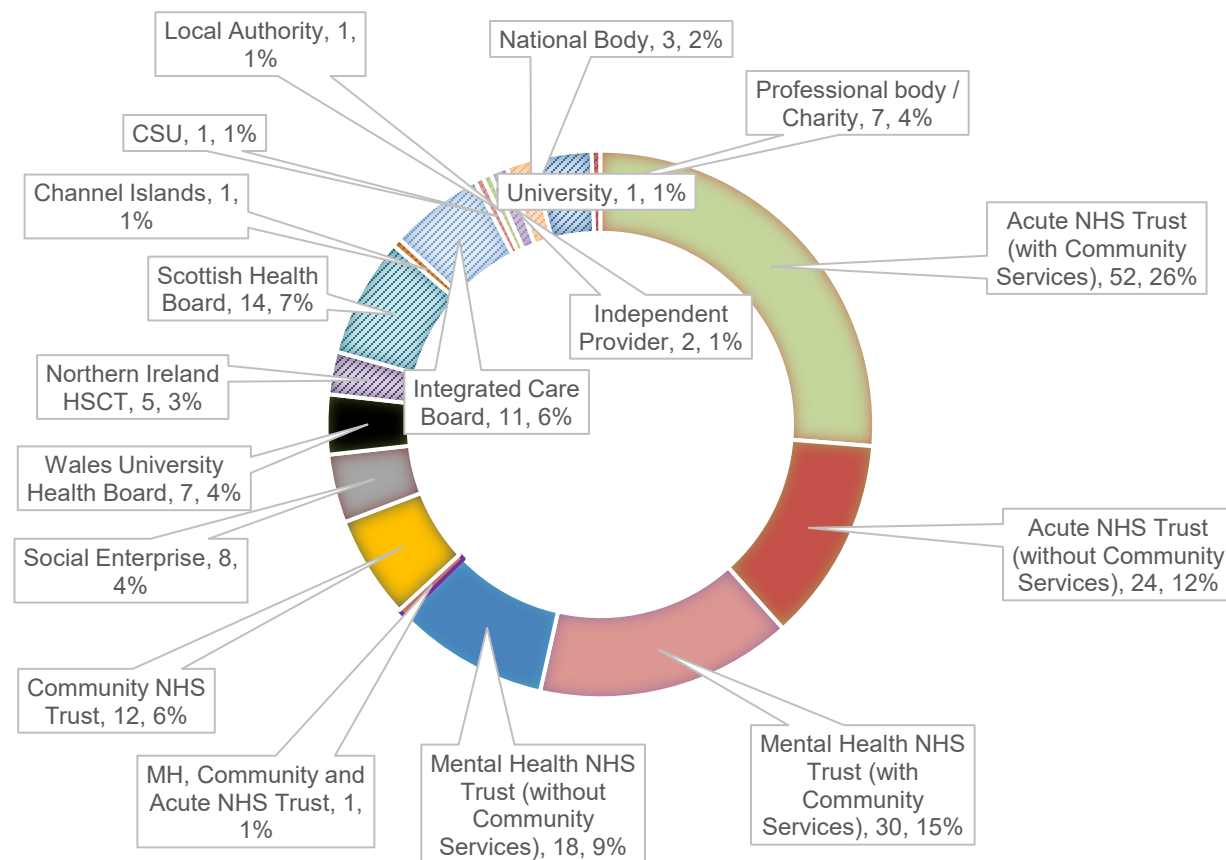
- In England:
 - 56% of Acute NHS Trusts
 - 68% of NHS Trusts providing community services
 - 8 Social Enterprises
 - 98% of Mental Health NHS Trusts
 - 26% of ICBs
 - Plus, NHS England, Department of Health and Social Care and several Professional Bodies.
- 100% coverage of Welsh University Health Boards, plus Health Education and Improvement Wales.
- 100% coverage of Northern Ireland Health and Social Care Trusts, plus Public Health Agency.
- 100% coverage of Scottish Health Boards, plus the Scottish Government.

**as of 31st August 2024*



Benchmarking Network

Membership profile



National Indicators

Strategic whole system/ICS insight

Includes:

- Data from Network's benchmarking projects
- Nationally available data sets across health and social care – HES, NHS England, NHS Digital, PHE, ONS
- Relationships/ correlations between key data 'Themes'

<https://members.nhsbenchmarking.nhs.uk/ics>



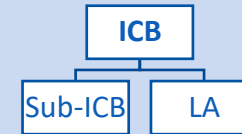
An online tool providing insight and intelligence on health and social care

7 domains

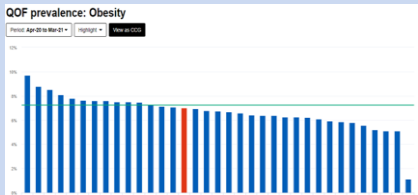


Over 800 metrics

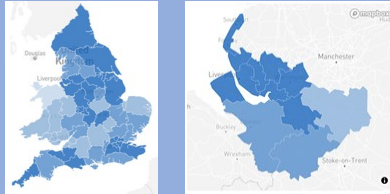
ICB default view with drill down to sub-ICB or LA



Charts



Maps



Time Series



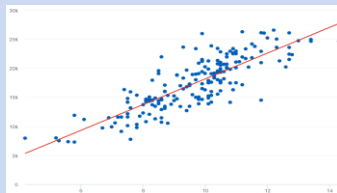
Summary tables

Data Table		Averages Table	
Code #	Name #	Period	
North			
E54000027	North West London	Apr-16 to Mar-17	
E54000050	Cumbria and North	Apr-17 to Mar-18	
E54000028	North London Parts	Apr-18 to Mar-19	
E54000020	Northamptonshire	Apr-19 to Mar-20	
E54000023	Suffolk and North E	Apr-20 to Mar-21	
E54000039	Bristol, North Some		
E54000040	Bath and North Eas		

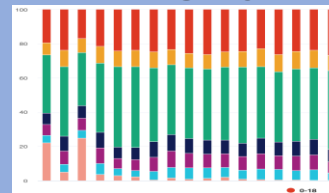
Dedicated group views




Compare key metrics



Stack data by category



 Bookmark

 Share

 Export



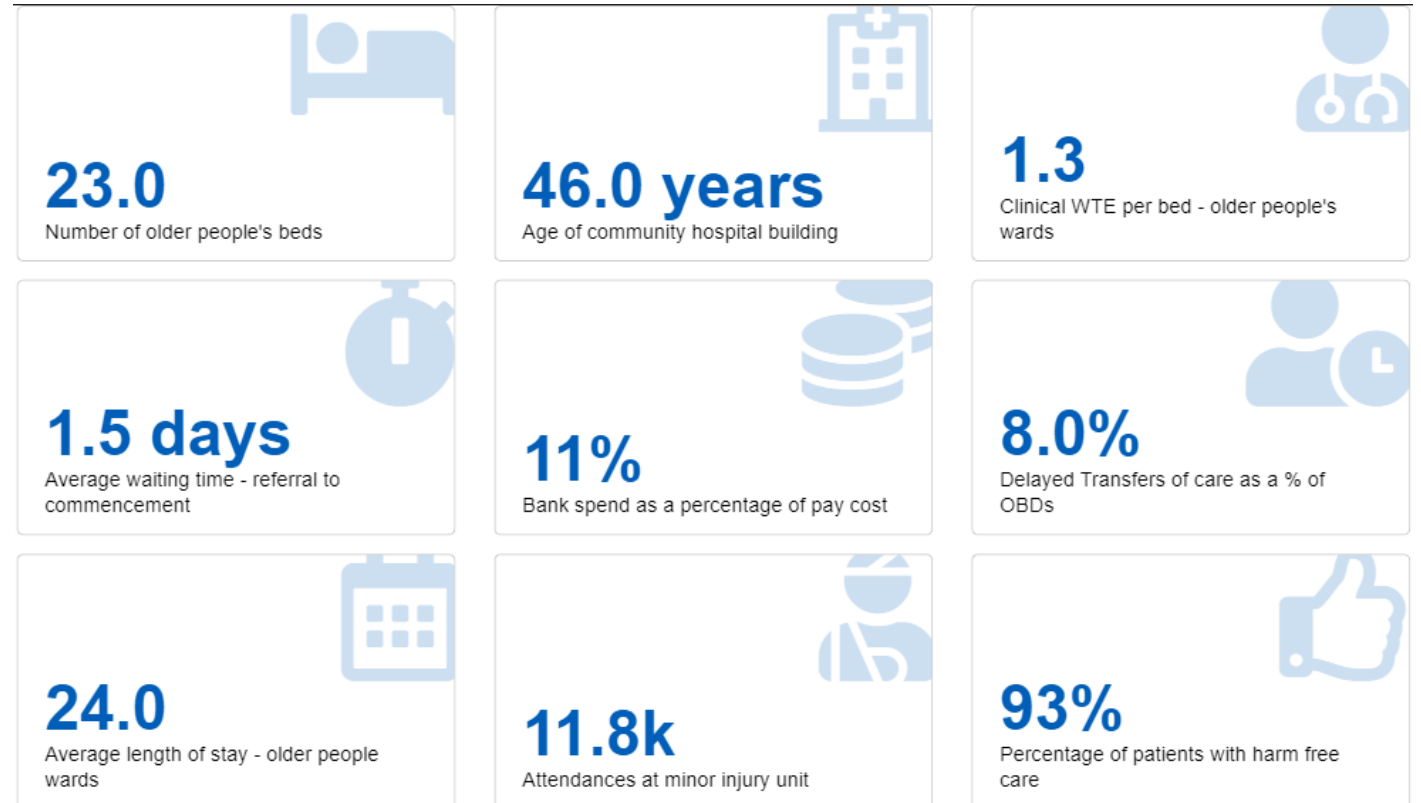
Benchmarking Network

NHS Benchmarking Network and Community Hospitals

Community Hospital Project

Captured data around: -

1. Service model
2. Capacity
3. Activity – ward base and non ward base
4. Workforce
5. Finance
6. Clinical Governance
7. Quality and Outcomes



Types of services provided

Services	% Yes
Rehabilitation services/therapies	95.3%
End of life care service	75.7%
Outpatients	73.8%
Diagnostics	51.4%
Other	35.8%
Minor injury unit	27.4%
Day treatments/ambulatory care	22.4%
Maternity services	21.7%
Dentistry	21.5%
GP practice(s)	18.7%
Elective surgery	8.5%
Renal Dialysis	7.5%
Rapid assessment unit	6.5%
Day care services (social)	6.5%

Outpatient clinics provided

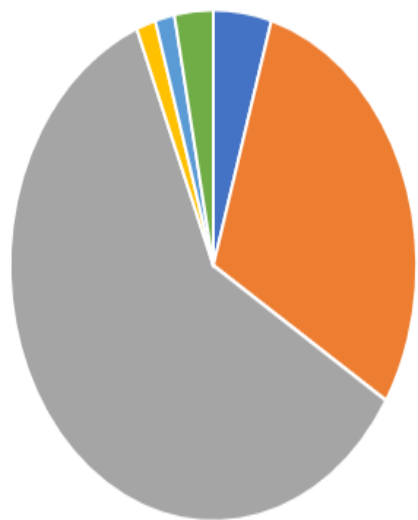
Clinics	% Yes
Physiotherapy	82.2%
Speech & language therapy	66.0%
Occupational therapy	60.4%
Podiatry	56.6%
Dietetics	55.7%
Other	51.0%
Paediatrics	41.5%
Clinical psychology	38.1%
Dermatology	35.2%
Urology	34.6%
General surgery	23.8%

Emergency Care Data

Type 3 and 4 units

Overview

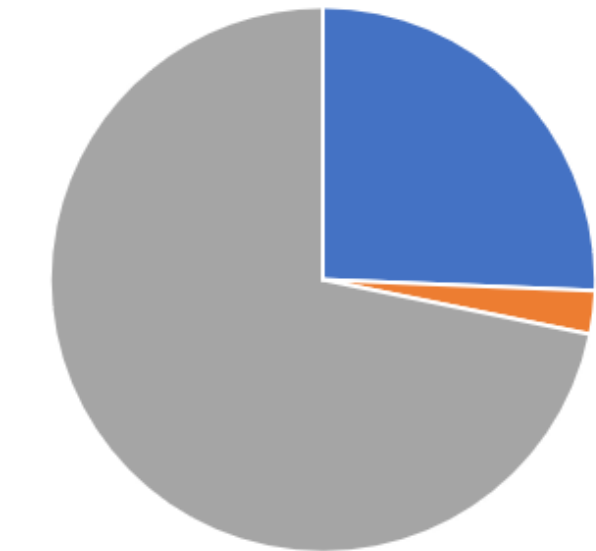
Location



■ Town centre ■ Major Hospital site
■ Community Hospital site ■ Residential
■ Other Rural ■ Other Urban

	%
Town centre	4.62
Major hospital site	29.2
Community hospital	60.0
Residential	1.54
Other rural	1.54
Other urban	3.08

Classification of community hospitals

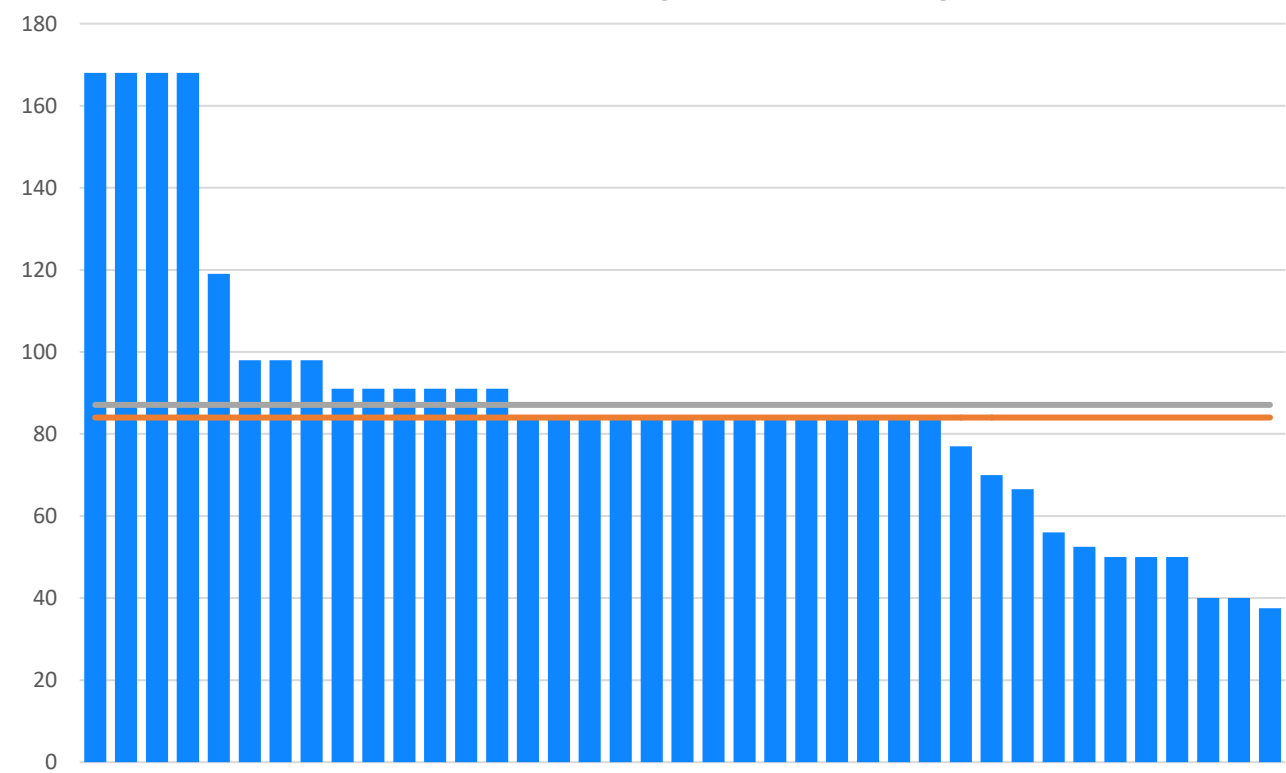


■ Urgent Treatment Centre (UTC) ■ Urgent Care Centre (UCC)
■ Minor Injuries Unit (MIU) ■ Walk-in centre
■ Other

	%
UTC	23.7
UCC	2.63
MIU	73.7
Walk in centre	-
Other	-

Service Model

Opening times - number of hours Monday to Sunday



Monday – Sunday

	Mean	Median
Community Hospital	87.2	84.0
Sample	98.9	84.0

Monday – Friday

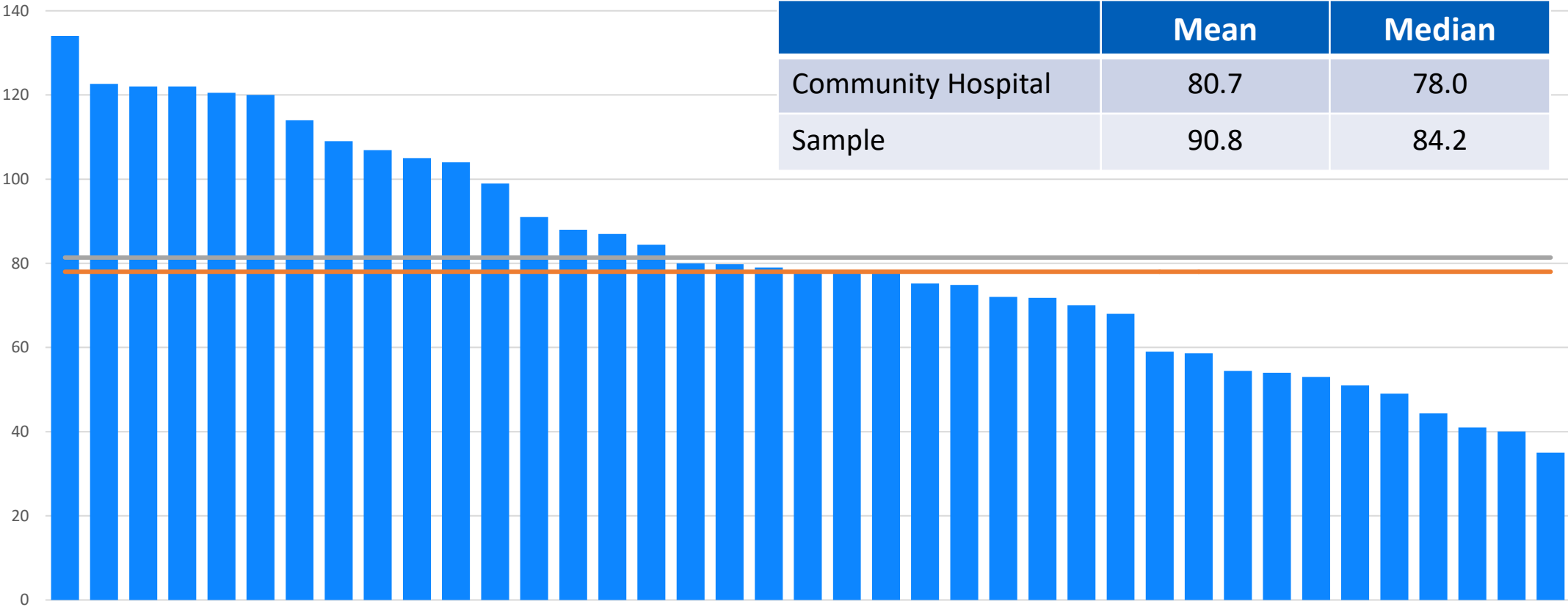
	Mean	Median
Community Hospital	64.8	60.0
Sample	72.4	62.0

Saturday – Sunday

	Mean	Median
Community Hospital	22.2	24.0
Sample	27.2	24.0

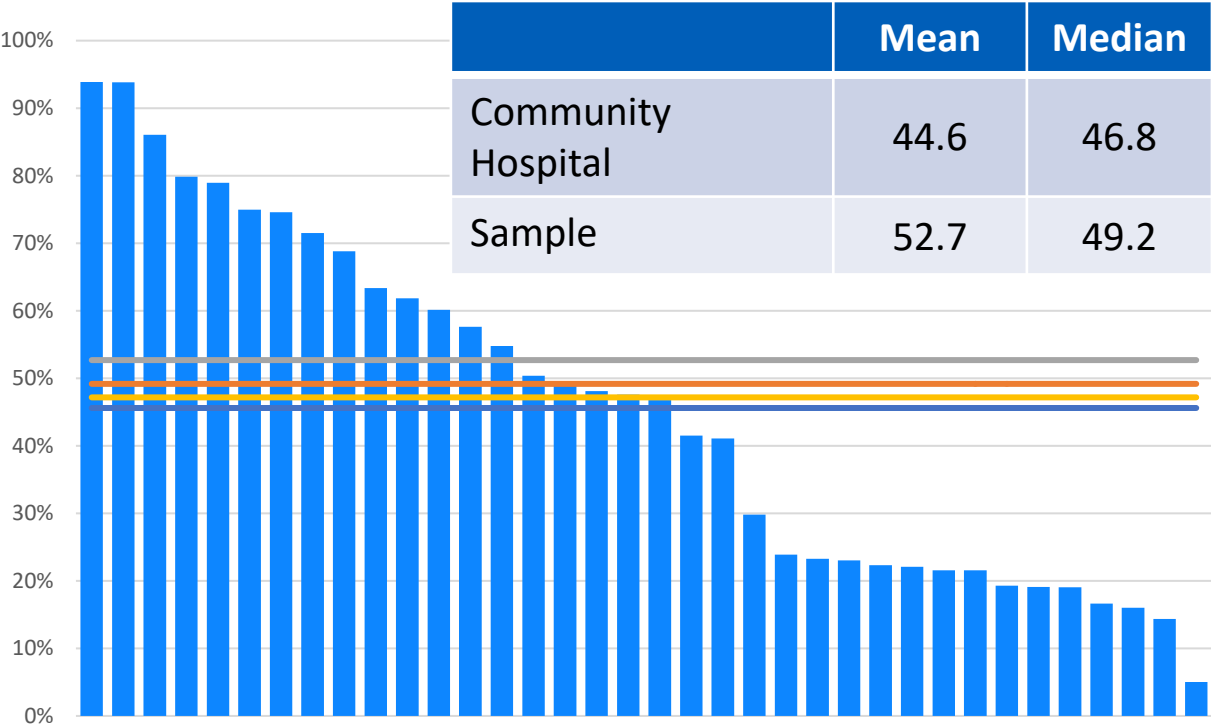
Activity

Mean time in unit (minutes)

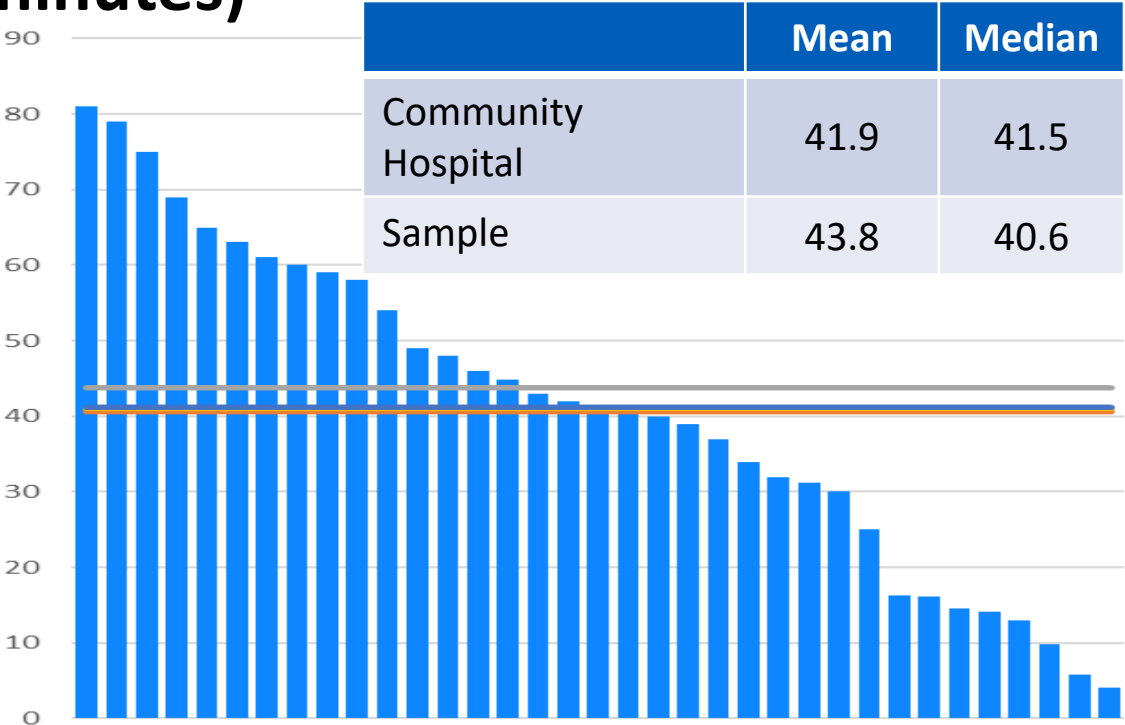


Activity

Percentage of patients triaged within 15 minutes

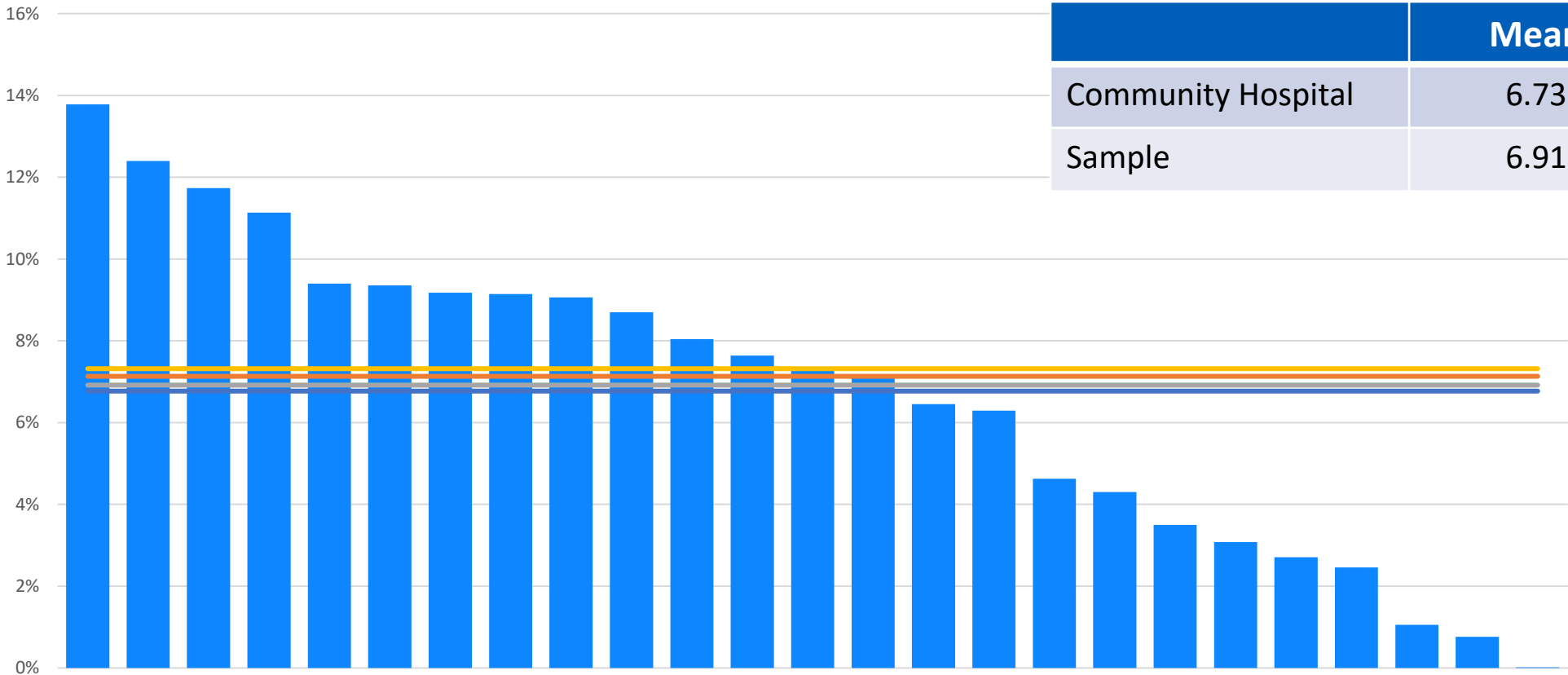


Mean length of time from arrival to first being seen by a clinician (minutes)



Patient Outcomes

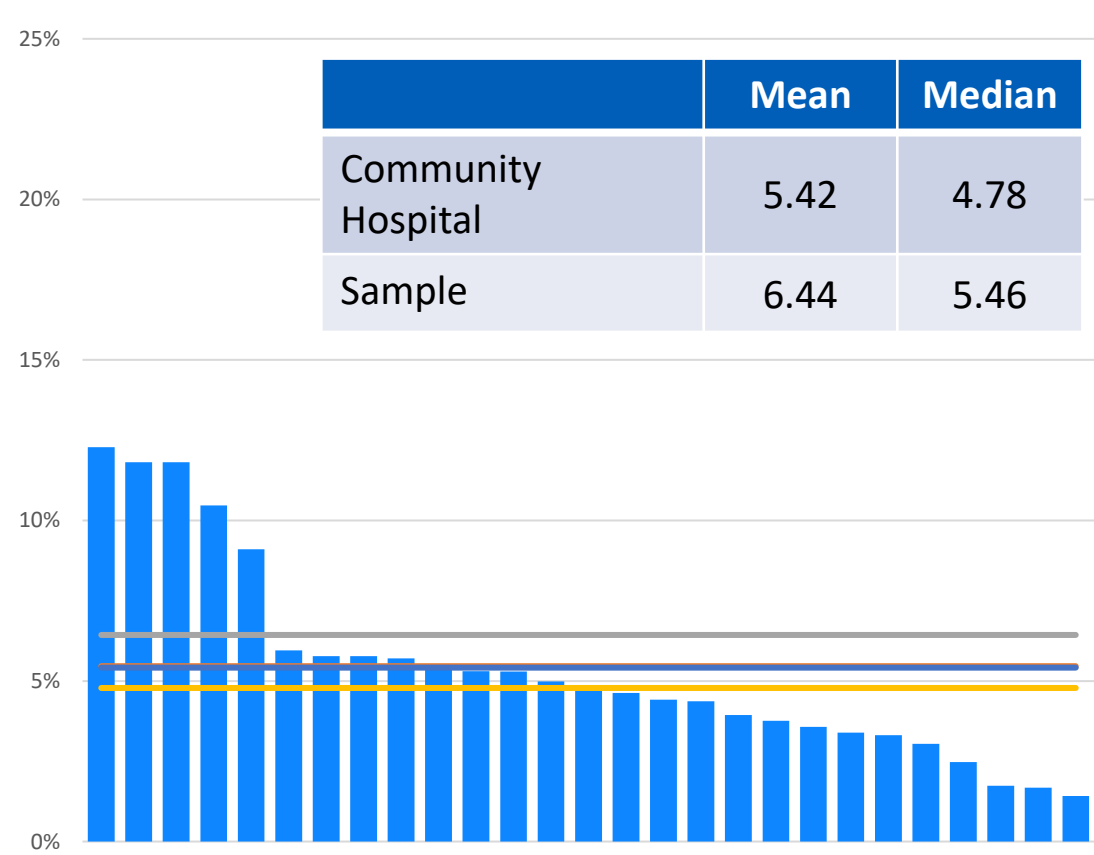
Proportion referred to type 1 ED



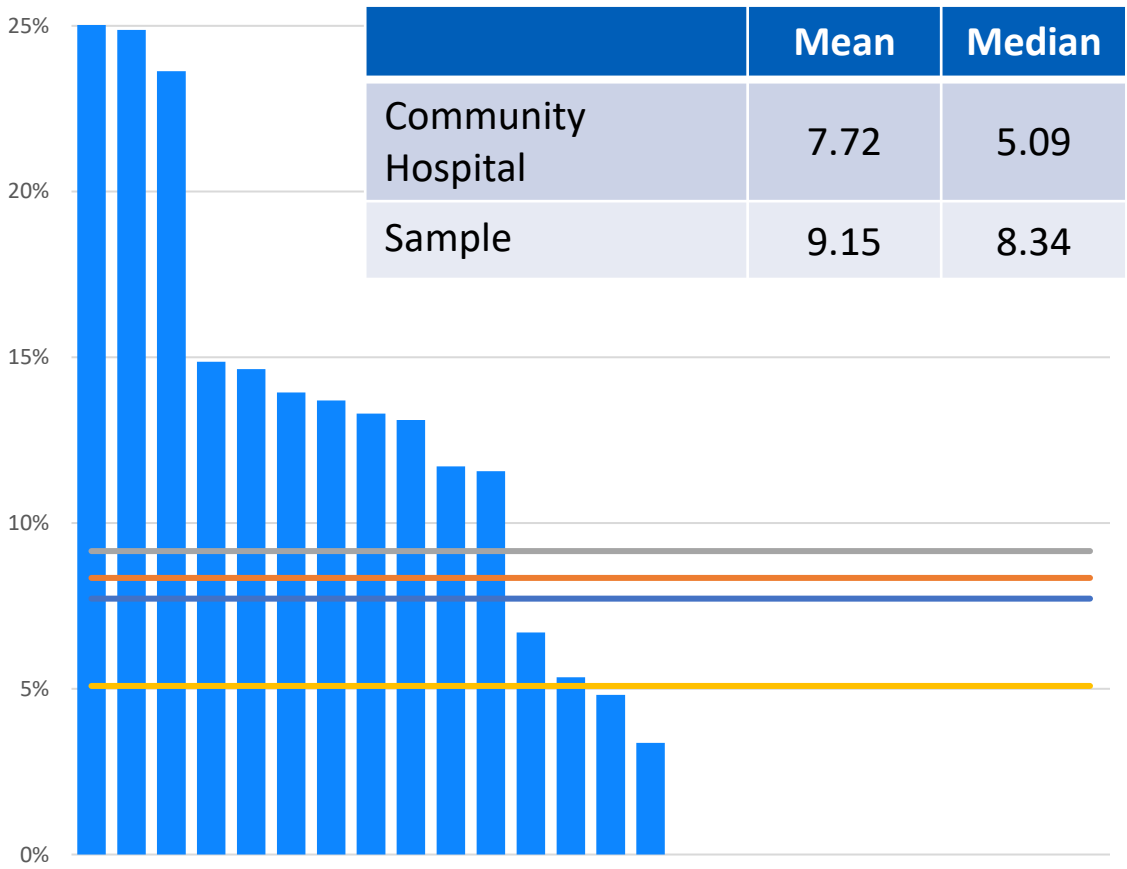
	Mean	Median
Community Hospital	6.73	7.23
Sample	6.91	7.13

Workforce

Sickness and absence rates

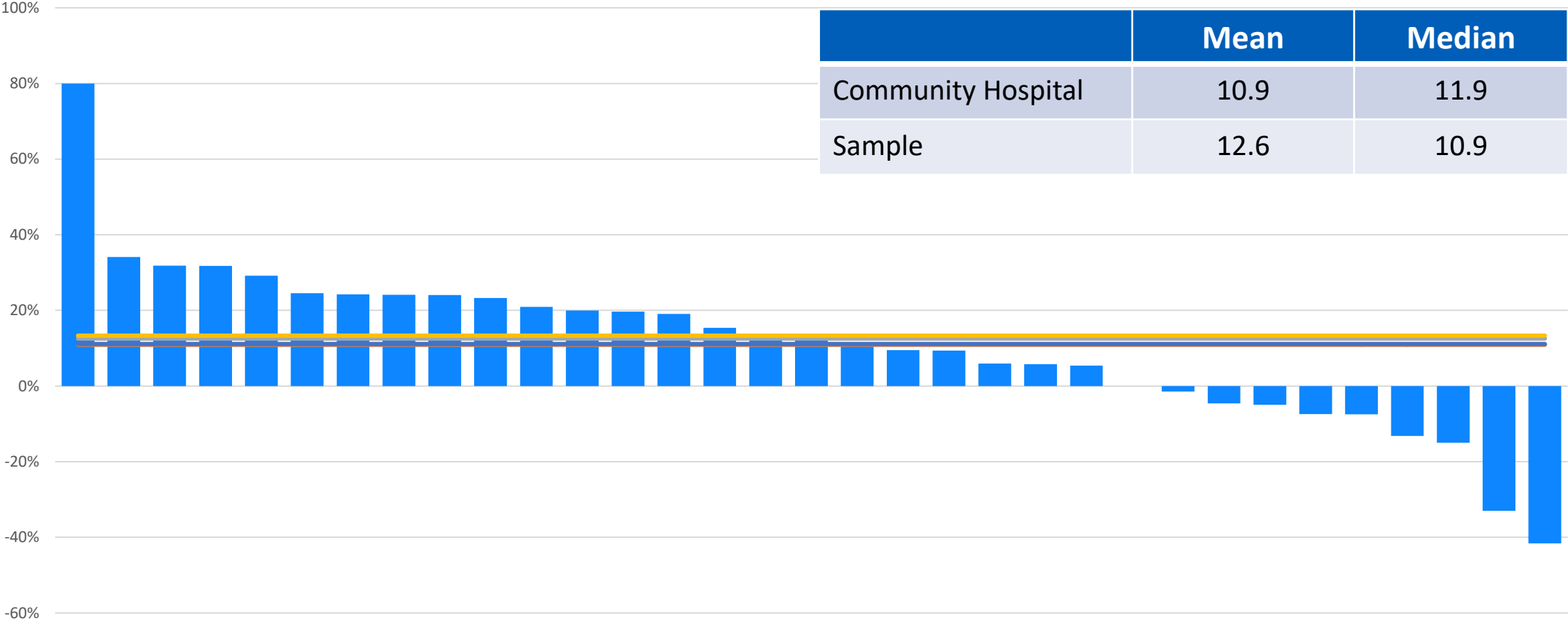


Turnover rates



Workforce

Vacancy rates

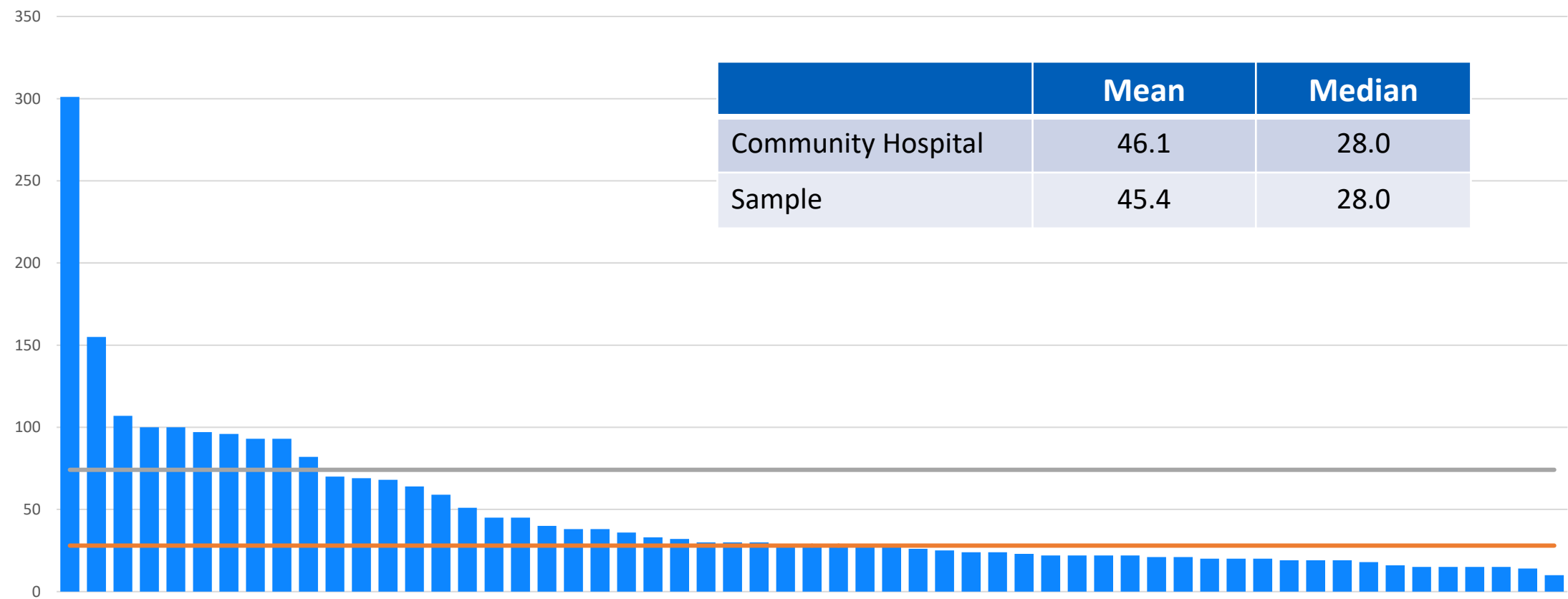


Intermediate Care Data

Bed based service

Intermediate care beds

Total number of intermediate care beds provided



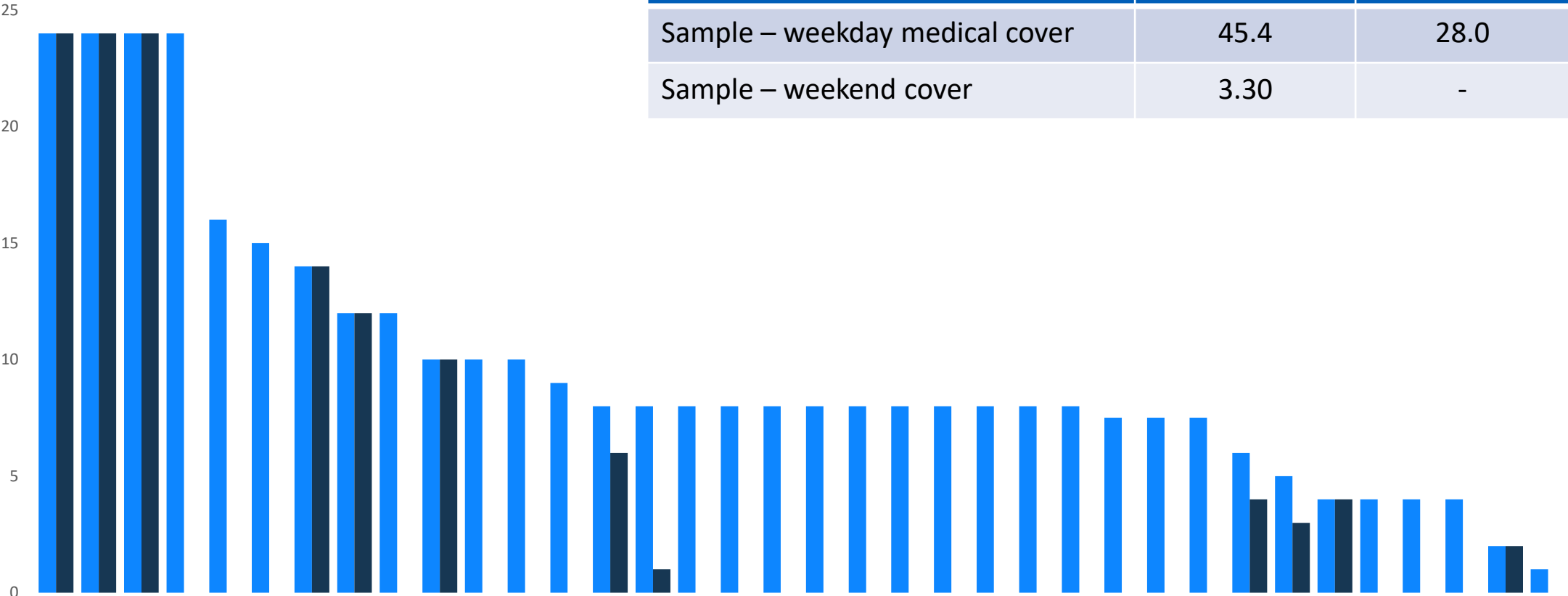
Medical cover



- Consultant Geriatrician (in house)
- Consultant Geriatrician (sub-contracted)
- GP and Consultant Geriatrician
- GP (in house)
- GP (sub contracted)
- Service user's own GP
- Advanced Nurse Practitioner
- Other

	Community Hospitals
Consultant Geriatrician (in house)	29.8
Consultant Geriatrician (sub contracted)	1.8
GP and Consultant Geriatrician	19.3
GP (in house)	21.1
GP (sub contracted)	15.8
Service users own GP	-
Advanced Nurse Practitioner	1.8
Other	10.5

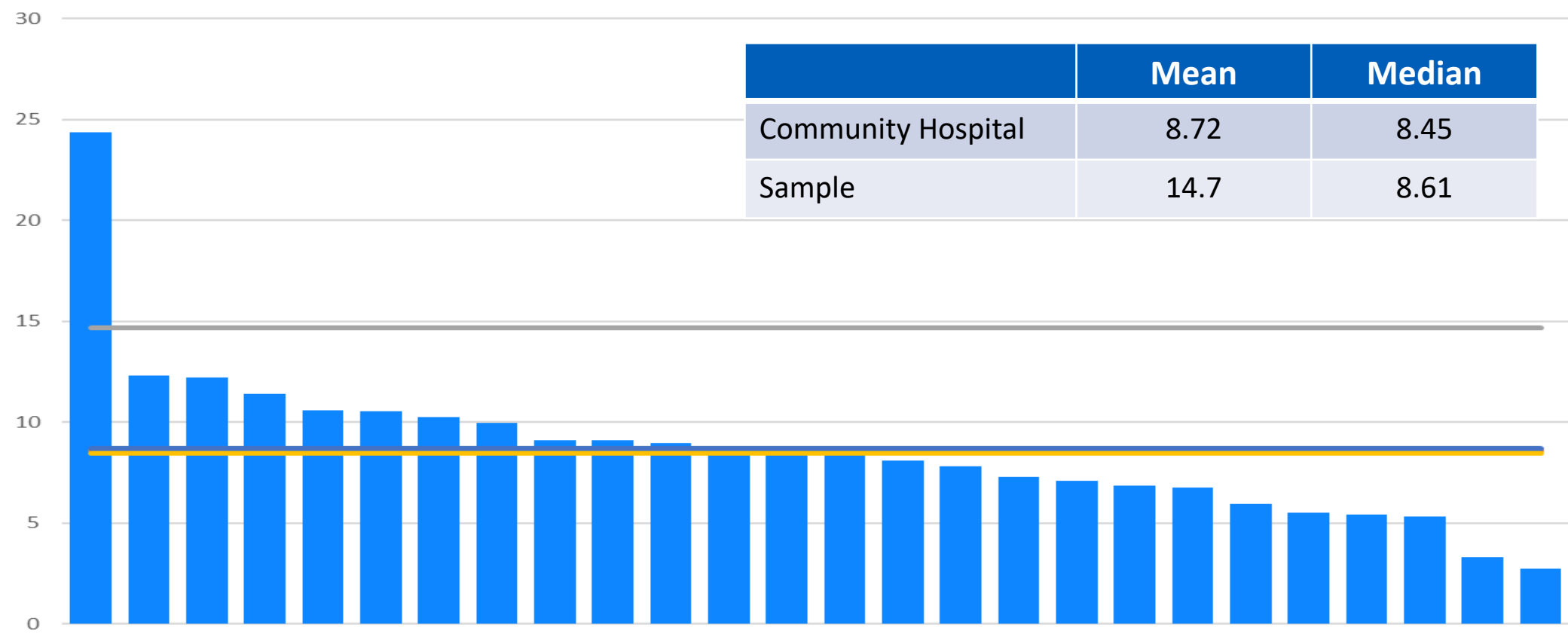
Medical cover



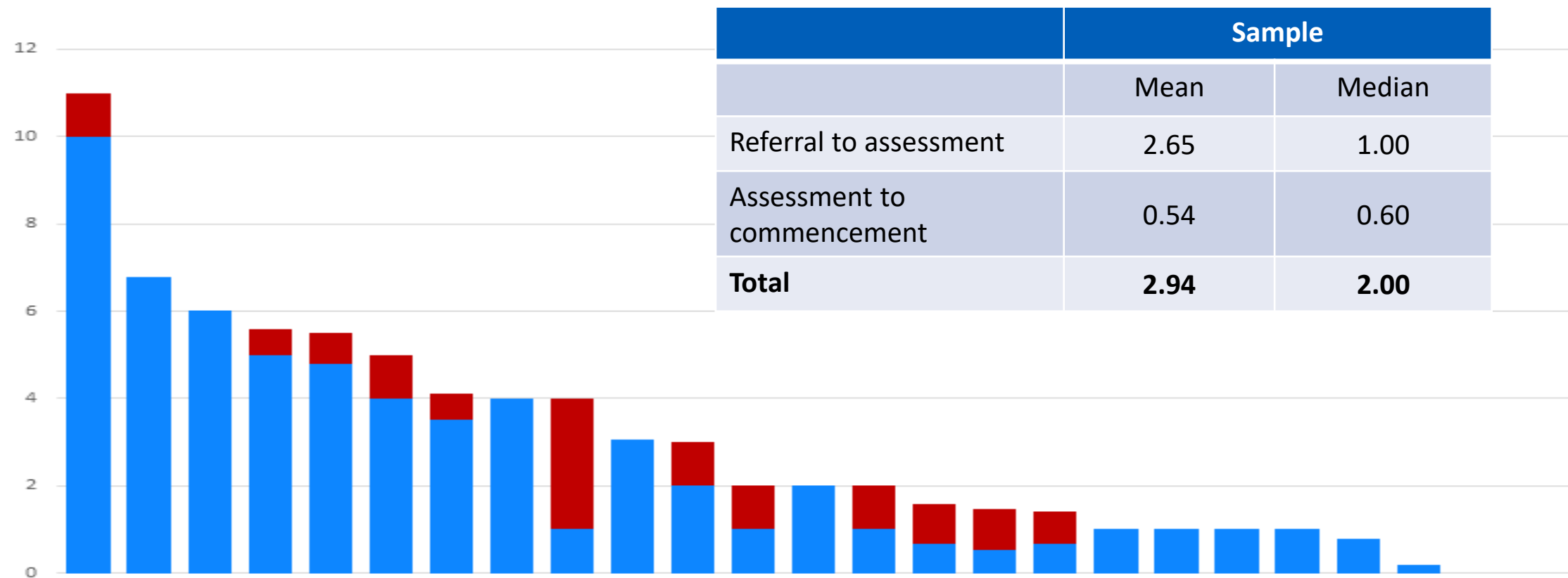
	Mean	Median
Sample – weekday medical cover	45.4	28.0
Sample – weekend cover	3.30	-

Activity - referrals

Total number of referrals per clinical WTE in post

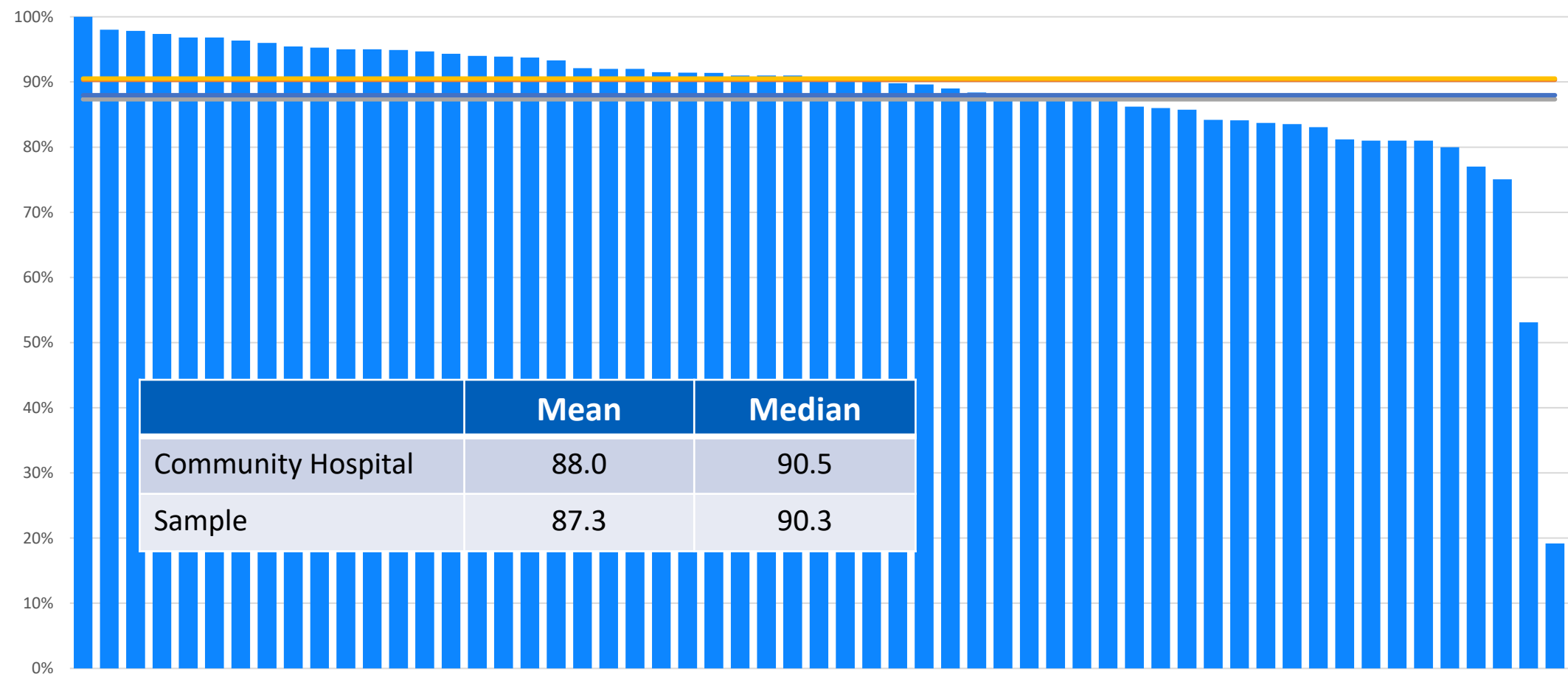


Activity – referral to commencement (days)

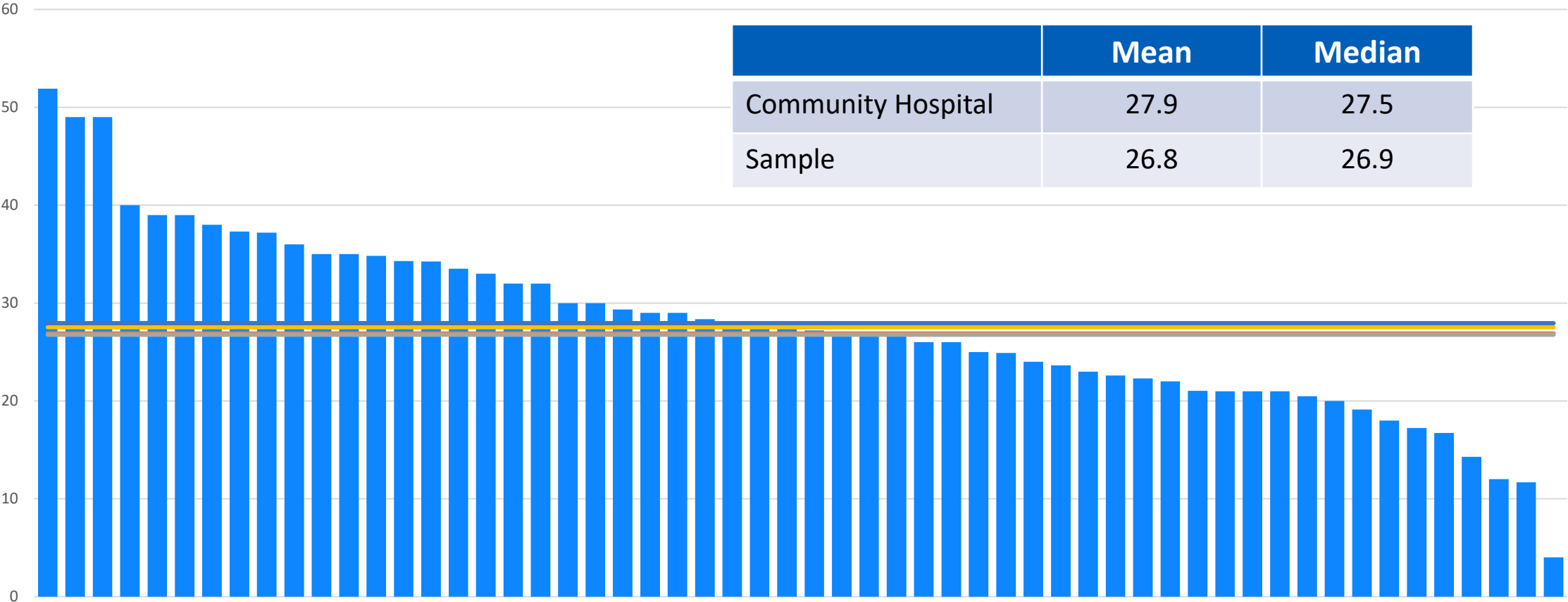


	Sample	
	Mean	Median
Referral to assessment	2.65	1.00
Assessment to commencement	0.54	0.60
Total	2.94	2.00

Activity – bed occupancy



Activity – length of stay (days)



Next steps

Questions

- **Is this data useful?**
- **What other data points would be useful in these areas?**
- **What other services / areas would it be helpful to benchmark?**

Findings Events

- **15 Oct** Emergency Care Benchmarking Findings
- **16 Oct** Pharmacy and Medicines Optimisation Benchmarking Findings
- **25 Oct** NHSBN & Queen's Nursing Institute: Exploring the Landscape of District Nursing in 2023/24
- **30 Oct** Adult and Older People's Mental Health Benchmarking Findings
- **13 Nov** Managing Frailty Benchmarking Findings
- **14 Nov** Children and Young People's Mental Health Benchmarking Findings
- **20 Nov** Therapies Benchmarking Findings (Adults and Children)
- **29 Nov** Healthy Child Programme and Children's Community Nursing Benchmarking Findings
- **10 Dec** Outpatients Benchmarking Findings
- **12 Dec** Intermediate Care Benchmarking Findings
- **14 Mar** Learning Disabilities Specialist Services Benchmarking Findings

Register Now